

APL

LIMIT SWITCH WITH POSITION INDICATOR FOR ACTUATOR



FEATURES

- Aluminum Die-Cast Housing With Powder coated
- Bolts on visual position indicator
- Quick-Set Cam
 - Spring loaded splined cam
 - No need to adjust again after initial setting
 - Easy setting without tool.
- Dual cable entries
 - 2 x 1/2 NPT (Standard)
 - M20, PG13.5, PF1/2", PT1/2" (Option)
- Dual cable entries
 - 2 x 1/2 NPT (Standard)
 - M20, PG13.5, PF1/2", PT1/2" (Option)

The APL series limit switch box offers uncompromising standards of safety, reliability, and value. It is designed to operate on quarter turn pneumatic actuators, and is rugged enough for industrial applications. Four innovative models make up the full line of valve monitoring systems, the APL200, APL300, APL400, APL500 series. Each model offers local visual display with remote switch signaling for continuous flow indication.

STANDARD TABLE

Model	APL200	APL300	APL400	APL500
Weather Proof	IP67 (NEMA4,4X)			
Explosion Proof	N/A		ExdIIBT6	ExdIICT6
Working Temperature	-25 °C ~ 85 °C			
Conduit	1/2" NPT		3/4" NPT	
Terminal Strip	8 Points			
Position Indicator	0 - 90 °C, Open Yellow, Close Red			
Available Switches Type	2 SPDT Mechanical : 5A 125/250VAC.	2 SPDT Mechanical : 5A 125/250VAC., / Proximity sensor : P&F NJ2-V3-N	2 SPDT Mechanical : 5A 125/250VAC., / Proximity sensor : P&F NJ2-V3-N	2 SPDT Mechanical : 5A 125/250VAC., Proximity sensor : P&F NJ2-V3-N
Potentiometer	N/A	1K Ω		
Feedback	N/A	4 ~ 20mA		
Shaft	17mm.	27 mm.		
Coating	Polyester Power Coating (Black)			
Bracket	30 x 80 H:20	30 x 130 H:20 ~ 50	30 x 80 H:20, 30 x 130 H:30	

We keep the right to change the mentioned dimensions, weights, values and materials at any time without direct notice

APL

ORDERING CODE

APL - 3 10 N

Enclosure Type

- 2 : Weather proof IP67 (Mini Type)
- 3 : Weather proof IP67 (General Type)
- 4 : Explosion proof (ExdIIBT6)
- 5 : Explosion proof (ExdIICT6)

Mechanical Switch

- 10 : 2-SPDT
- 11 : 3-SPDT
- 12 : 4-DPDT
- 13 : 2-SPST
- 14 : 2-DPDT
- 15 : 2-SPDT+Potentiometer
- 16 : 2-SPDT+ Signal Unit 4-20mA

Position Indicator

Proximity Sensor

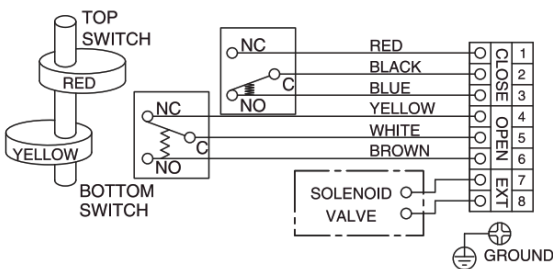
- 20 : P&F NJ2-V3-N
- 21 : Autonic PS17-5DNU
- 22 : P&F NJ4-12GM-N
- 23 : NBB2-V3

Reed type Proximity Sensor

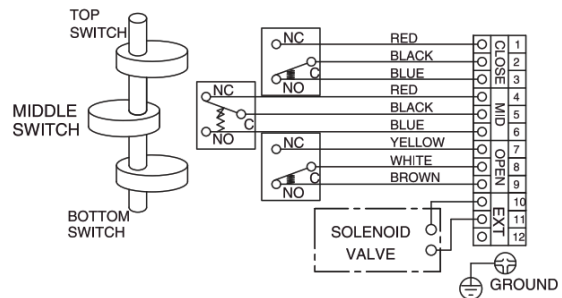
- 30 : General Type
- 31 : High Temp (Upto +100 °C)

Wiring Diagrams

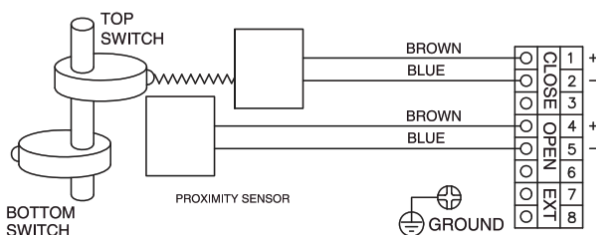
MECHANICAL SWITCH(2 SPDT)



MECHANICAL SWITCH(3 SPDT)



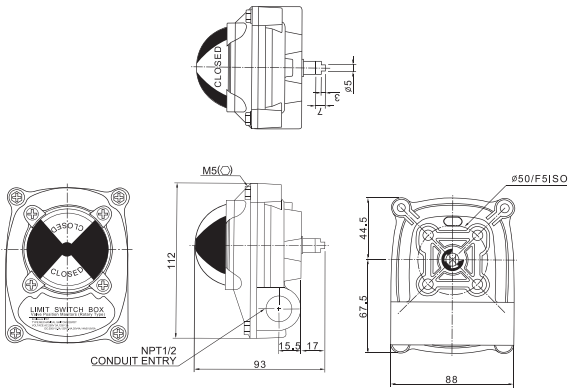
PROXIMITY SWITCHES



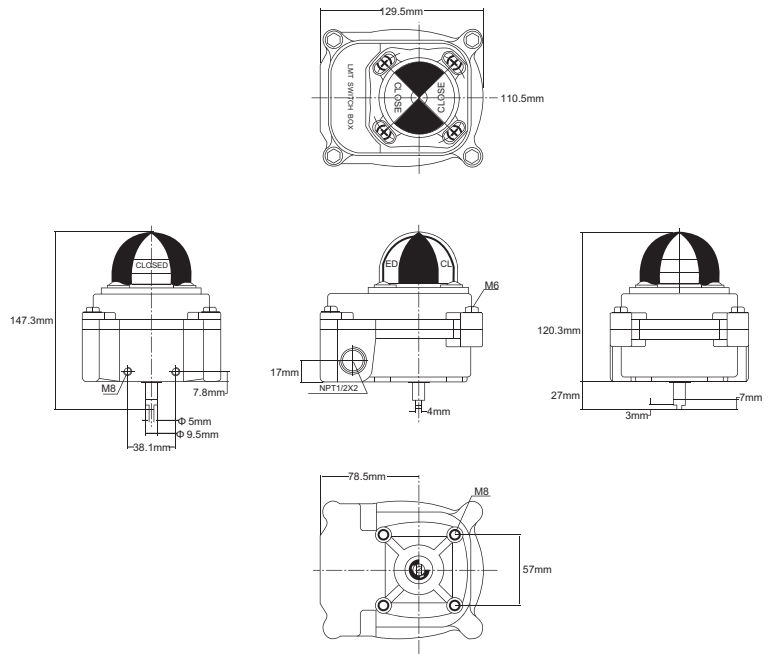
APL

DIMENSION

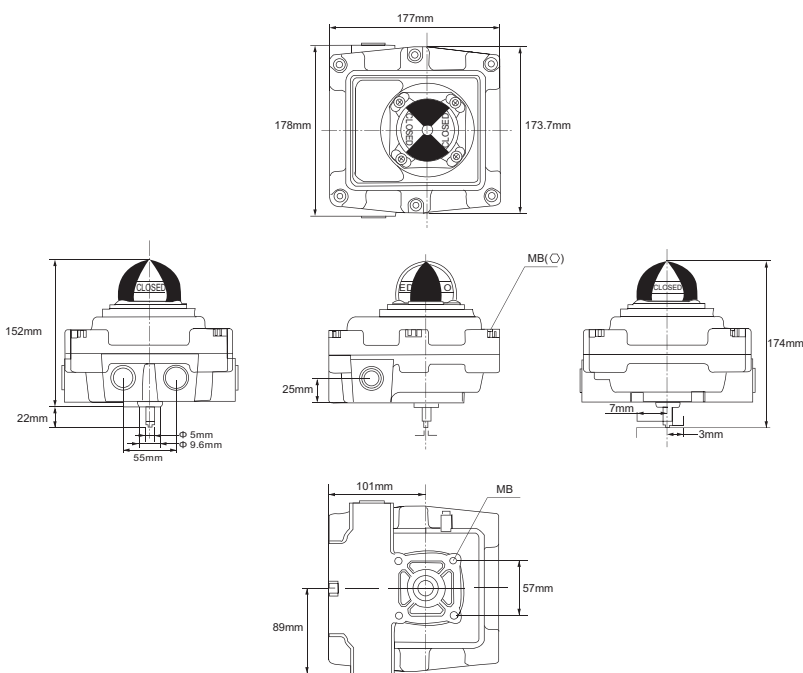
APL200 Series



APL300 Series



APL400 Series



APL500 Series

