

STAINLESS STEEL PRESSURE GAUGE



SERVICE INTENDED

This pressure gauge is suitable for corrosive environment. Typical application include chemical, petro-chemical, refining, power, marine or food industry. Its stainless steel case and cover have good appearance and excellent proof to corrosive & chemical attack.

NOMINAL DIAMETER

63, 80, 100 and 160mm

ACCURACY

Model : DIAL 63mm & DIAL 80mm: 1.6 PER DIN 16 005
Model : DIAL 100mm & DIAL 160mm: 1.0 PER DIN 16 005

SCALE RANGE

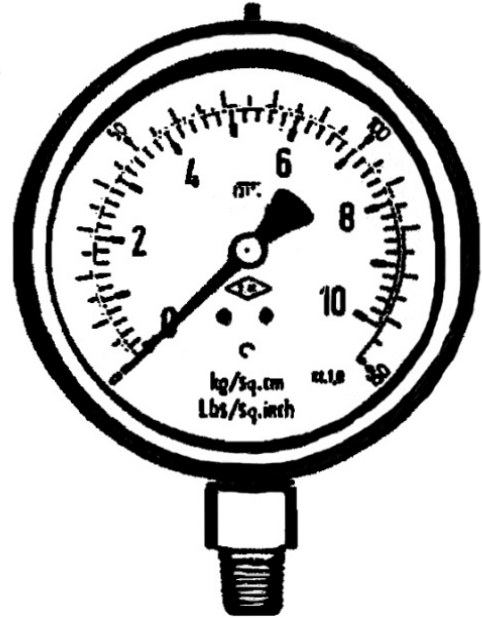
63mm and 80mm : -1 ~ 0 to 0 ~ 1000 kg/Sq.cm
100mm and 160mm : -1 ~ 0 to 0 ~ 1600 kg/Sq.cm

WORKING TEMPERATURE

Ambient : -40 ~ 60 °C
Fluid : +200 °C maximum

DEGREE OF PROTECTION

IP65



Standard Features

PRESSURE CONNECTION

Stainless Steel 316SS

CASE & COVER

Stainless Steel 304SS

MOVEMENT

Stainless Steel 316SS

ELEMENT

Stainless Steel 316SS

WINDOW

63mm and 80mm - Glass
100mm and 160mm - Laminated
Safety Glass

DIAL

White Aluminum with Black and Red Lettering

POINTER

Aluminium alloy, Black painted

BLOWOUT PROTECTION

Back, Rubber Disc for 100 mm and 160mm
Top, Rubber Disc for 63mm and 80 mm

PROCESS CONNECTION

63mm : 1/4" BSP
80mm : 1/4", 3/8" BSP
100mm and 160mm : 3/8" BSP



TAKEDA GAUGE MFG. CO. LTD.

Please contact : Ruamcharoen Engineering & Supplies Ltp. Tel : 02-7486096-7 Fax : 02-7486490 www.ruamcharoen.com

STAINLESS STEEL PRESSURE GAUGE



SERVICE INTENDED

This pressure gauge is suitable for corrosive environment. Typical application include :
chemical, petro-chemical, refining, power, marine or food industry.
The filled liquid absorbs vibration effect and pulsation pressure.

NOMINAL DIAMETER

63. 80. 100 and 160mm

ACCURACY

Model : DIAL 63mm & DIAL 80mm: 1.6 PER DIN 16 005
Model : DIAL 100mm & DIAL 160mm: 1.0 PER DIN 16 005

SCALE RANGE

63mm and 80mm : -1 ~ 0 to 0 ~ 1000 kg/Sq.cm
100mm and 160mm : -1 ~ 0 to 0 ~ 1600 kg/Sq.cm

WORKING TEMPERATURE

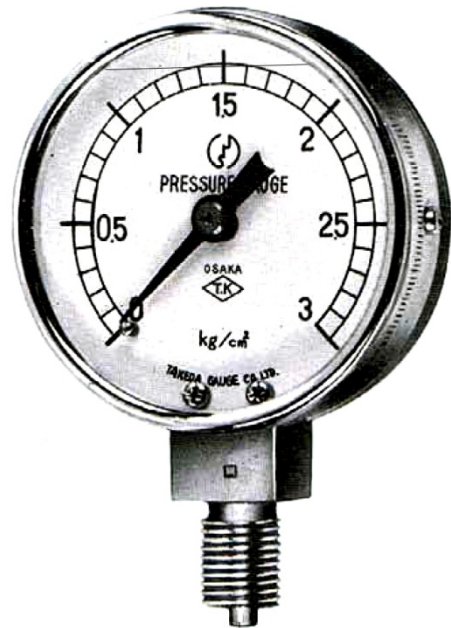
Ambient : -40 ~ 60 °C
Fluid : +200 °C maximum

FILLING LIQUID

Glycerin

DEGREE OF PROTECTION

IP65



Standard Features

PRESSURE CONNECTION

Stainless Steel 316SS

CASE & COVER

Stainless Steel 304SS

MOVEMENT

Stainless Steel 316SS

ELEMENT

Stainless Steel 316SS

WINDOW

63mm and 80mm - Glass
100mm and 160mm - Laminated
Safety Glass

DIAL

White Aluminum with Black and Red Lettering

POINTER

Aluminium alloy, Black painted

BLOWOUT PROTECTION

Back, Rubber Disc for 100 mm and 160mm
Top, Rubber Disc for 63mm and 80 mm

PROCESS CONNECTION

63mm : 1/4" BSP
80mm : 1/4", 3/8" BSP
100mm and 160mm : 3/8" BSP



TAKEDA GAUGE MFG. CO. LTD.

Please contact : Ruamcharoen Engineering & Supplies Ltp. Tel : 02-7486096-7 Fax : 02-7486490 www.ruamcharoen.com